

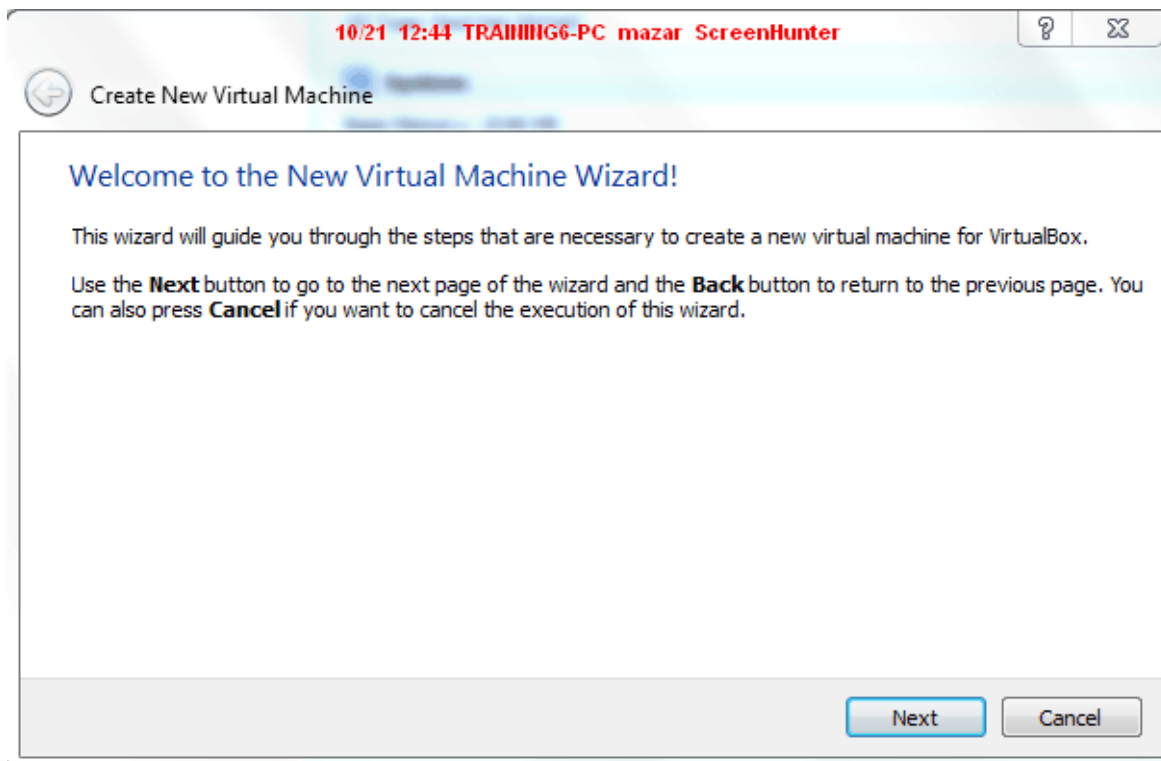
Redhat Linux Server 6 installation guide on Virtual Box

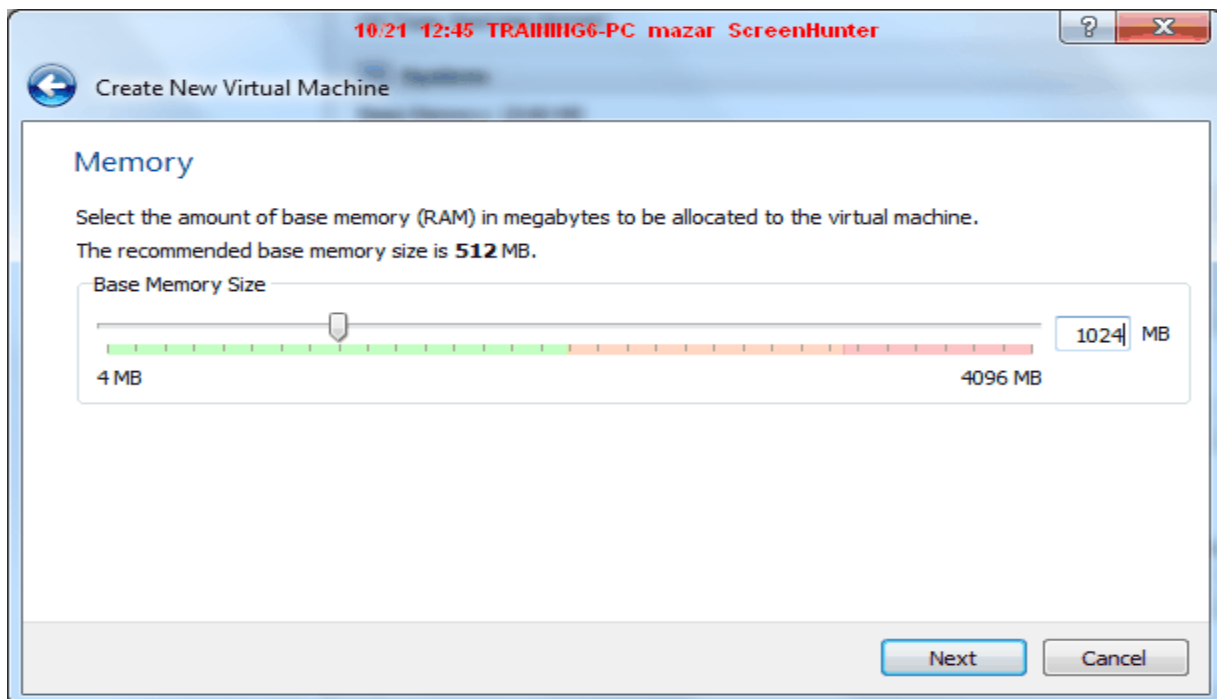
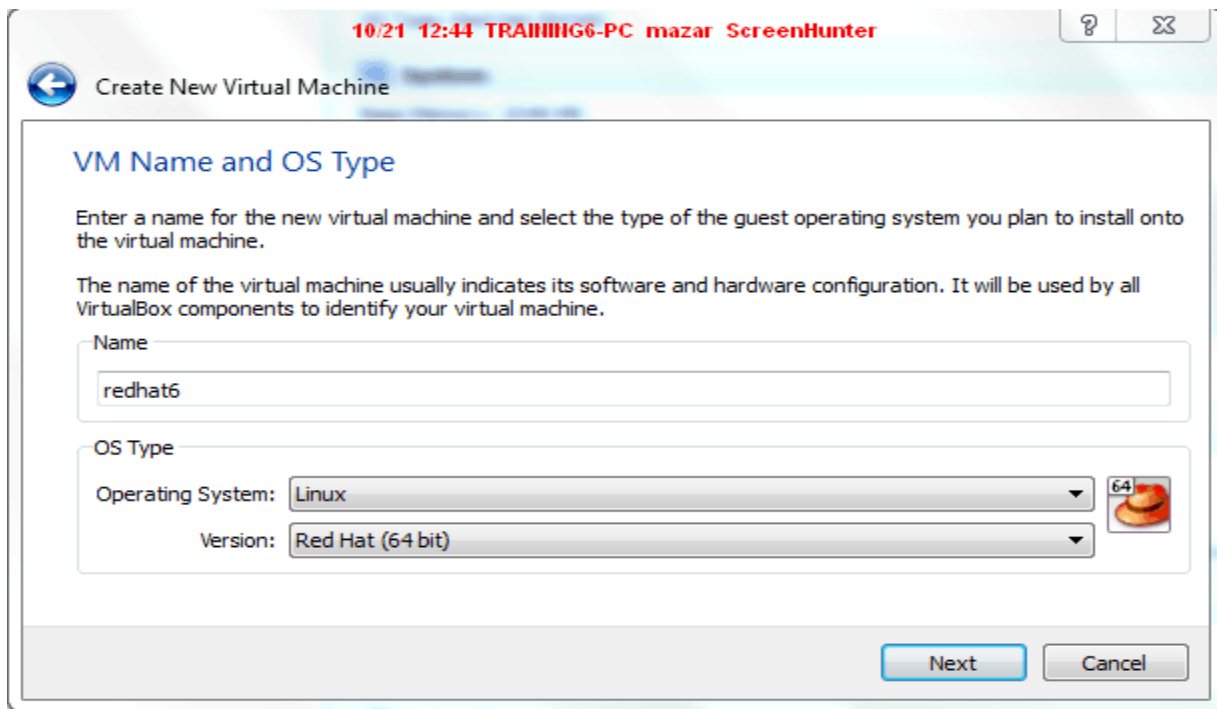
Note : Here I'm going to install Redhat 6 server edition not for Desktop edition so you can not get GUI.

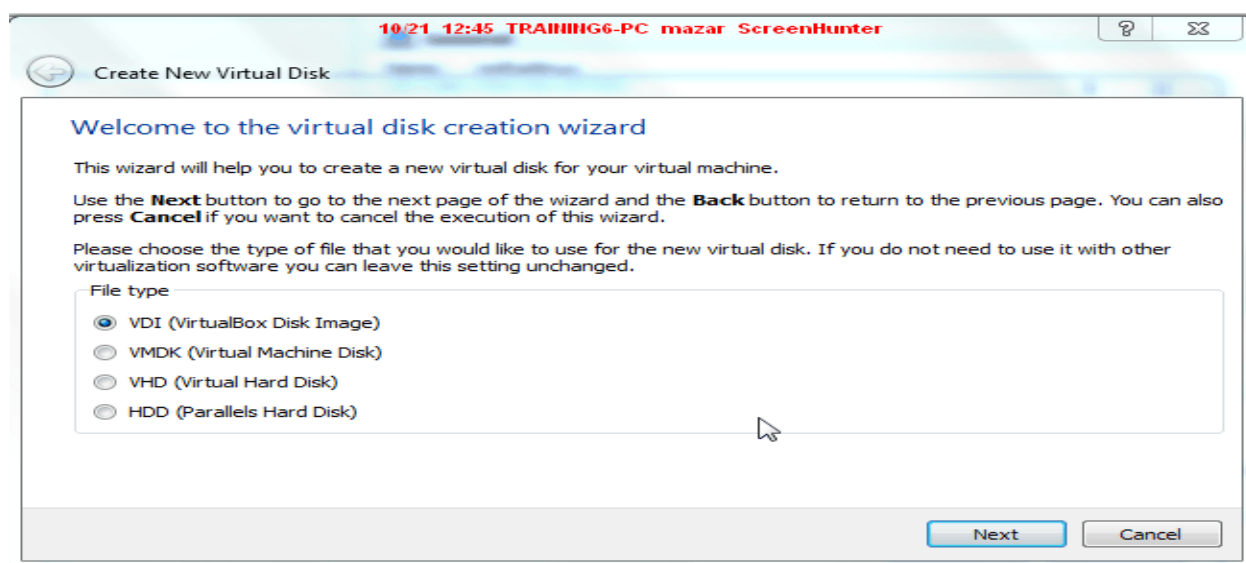
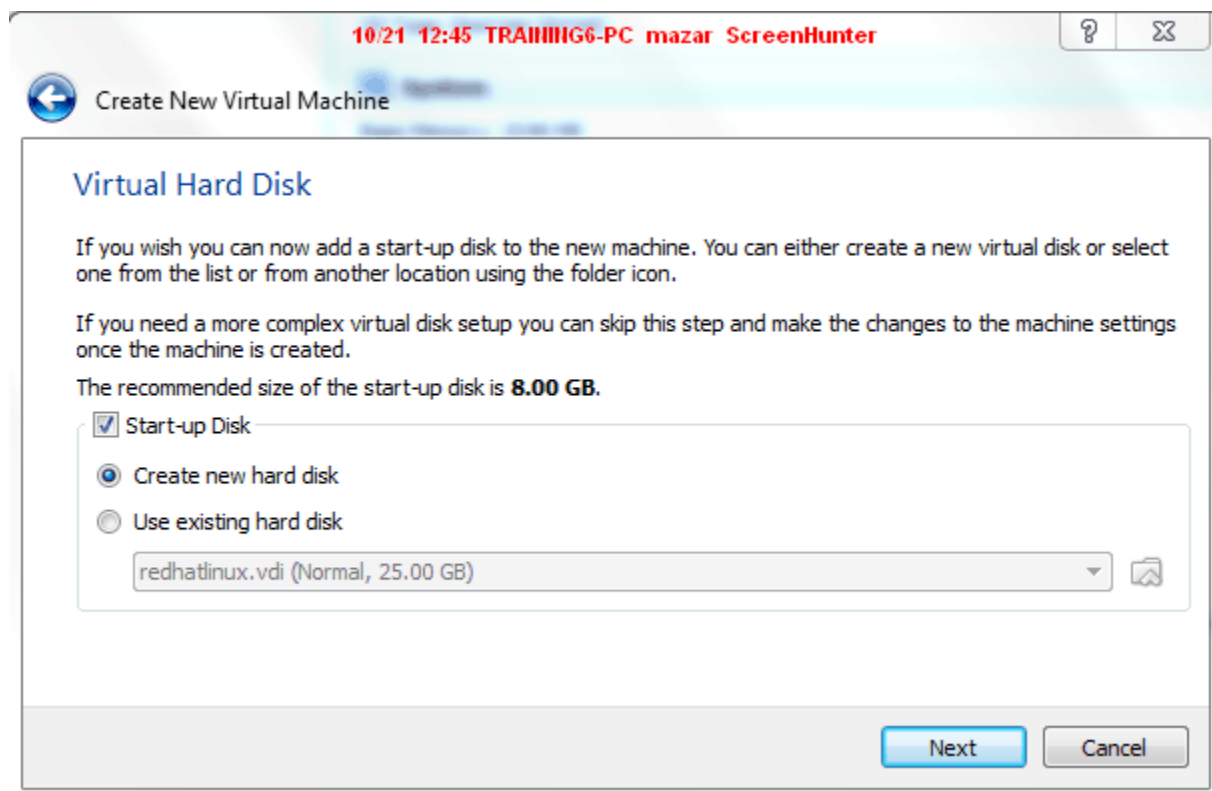
Download Redhat Linux 6

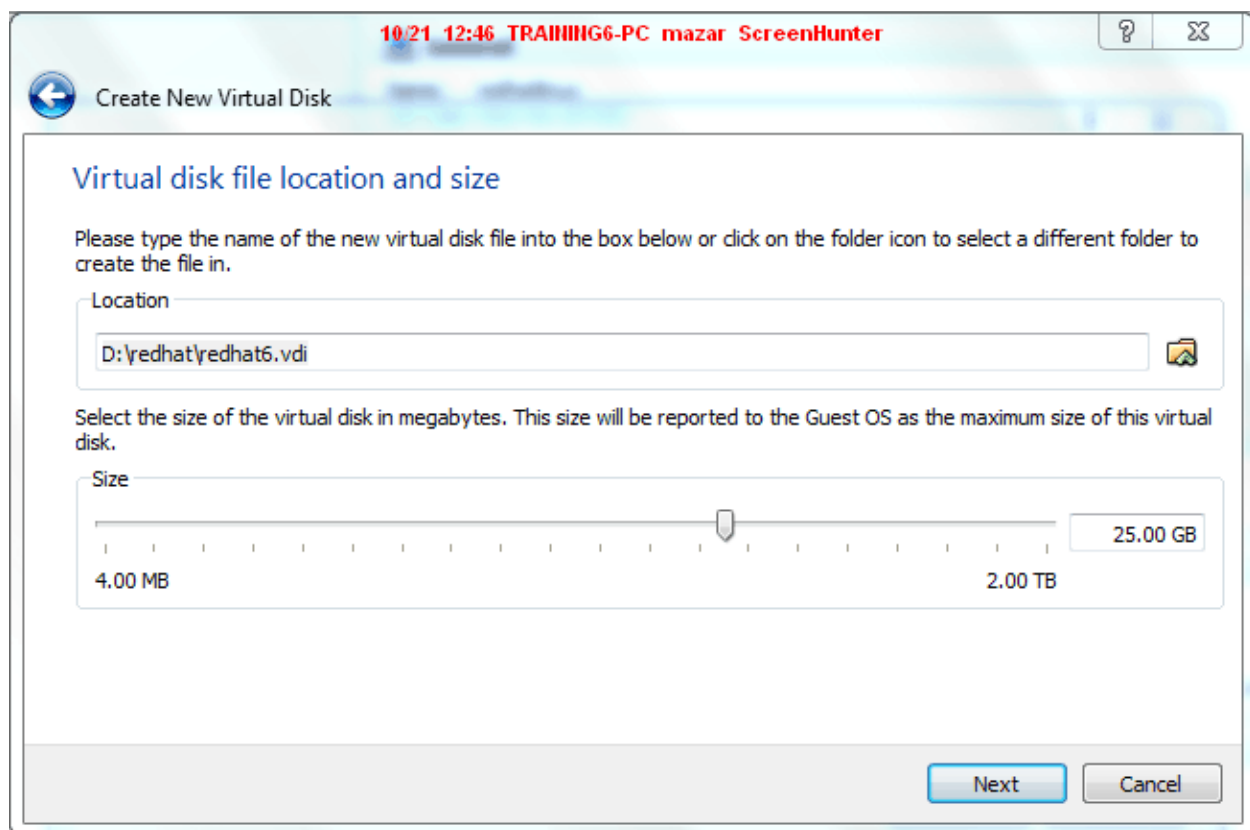
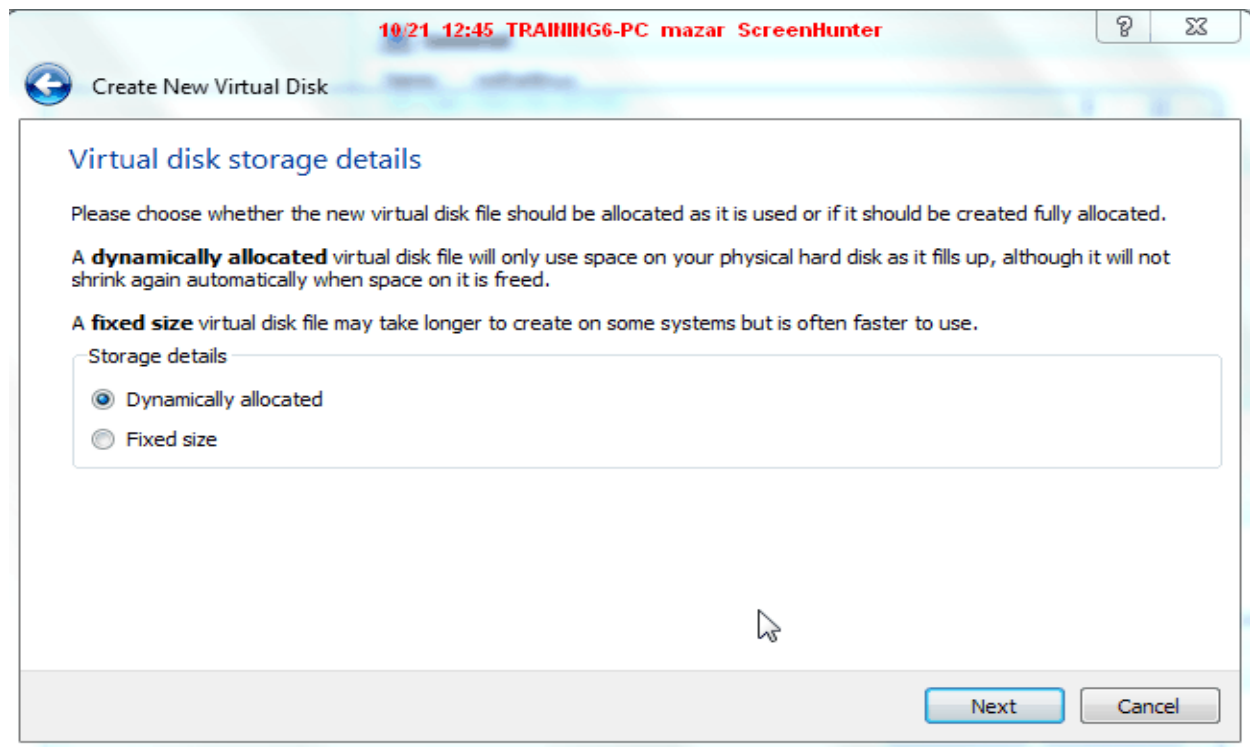
http://www.redhat.com/download/howto_download.html/

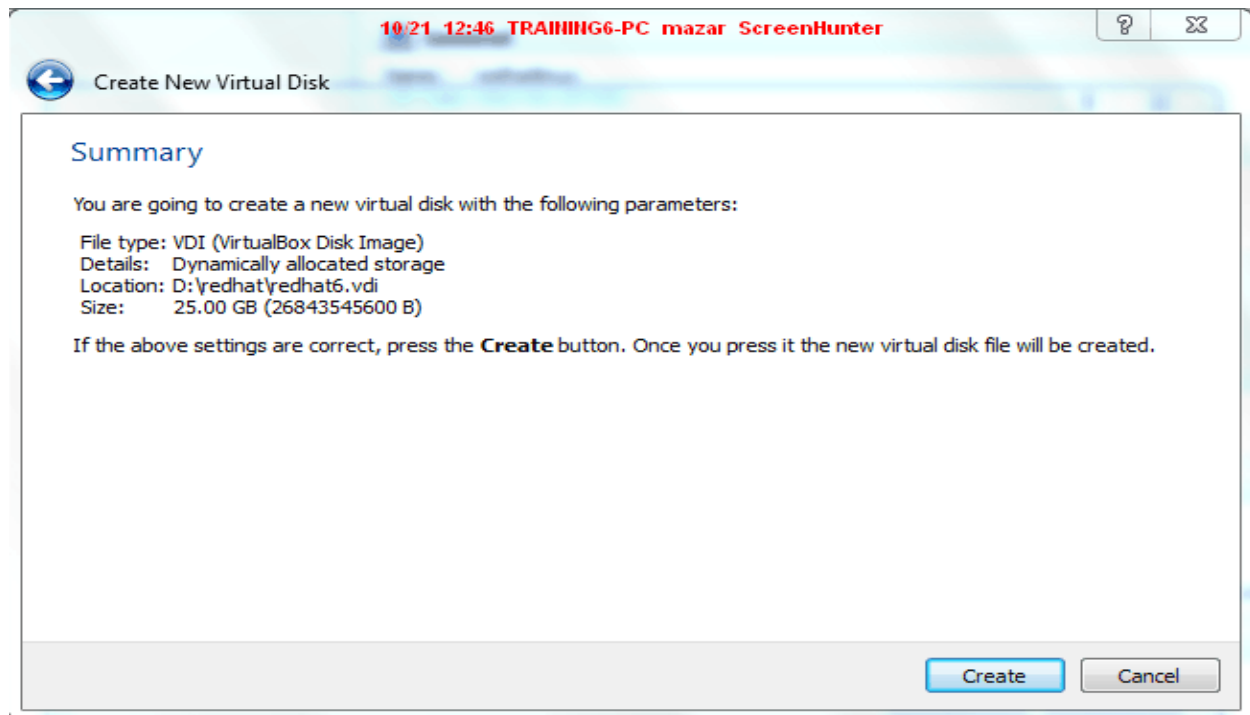
Step 1: Create new virtual machine



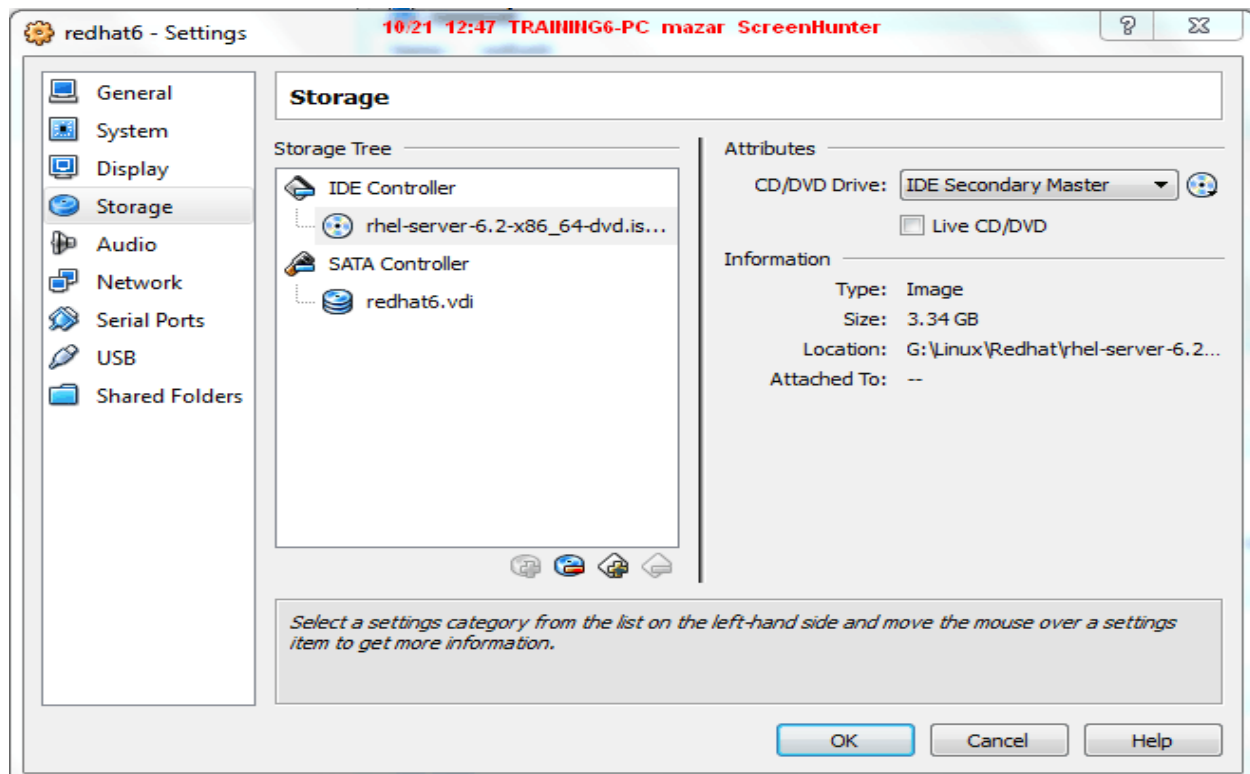








Step 2: Choose Redhat Linux OS ISO File



Step 3: Start Redhat Linux 6 OS installation procedure





<Tab>/<Alt-Tab> between elements | <Space> selects | <F12> next screen





Select the appropriate keyboard for the system.

10/21 12:49 TRAINING6-PC mazar ScreenHunter

Italian
Italian (IBM)
Italian (it2)
Japanese
Korean
Latin American
Macedonian
Norwegian
Polish
Portuguese
Romanian
Russian
Serbian
Serbian (latin)
Slovak (qwerty)
Slovenian
Spanish
Swedish
Swiss French
Swiss French (latin1)
Swiss German
Swiss German (latin1)
Turkish
U.S. English
U.S. International



10/21 12:51 TRAINING6-PC mazar ScreenHunter

Please name this computer. The hostname identifies the computer on a network.

Hostname:

Please select the nearest city in your time zone. 10/21 12:52 TRAINING6-PC mazar ScreenHunter



Selected city: Riyadh, Asia





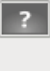


The root account is used for administering the system. Enter a password for the root user.

Root Password:

Confirm:

Which type of installation would you like?

- ☐  **Use All Space**
Removes all partitions on the selected device(s). This includes partitions created by other operating systems.
Tip: This option will remove data from the selected device(s). Make sure you have backups.
- ☒  **Replace Existing Linux System(s)**
Removes only Linux partitions (created from a previous Linux installation). This does not remove other partitions you may have on your storage device(s) (such as VFAT or FAT32).
Tip: This option will remove data from the selected device(s). Make sure you have backups.
- ☐  **Shrink Current System**
Shrinks existing partitions to create free space for the default layout.
- ☐  **Use Free Space**
Retains your current data and partitions and uses only the unpartitioned space on the selected device(s), assuming you have enough free space available.
- ☐  **Create Custom Layout**
Manually create your own custom layout on the selected device(s) using our partitioning tool.

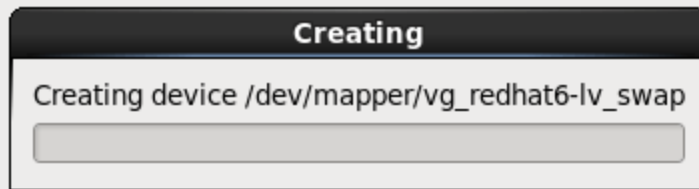
Writing storage configuration to disk



The partitioning options you have selected will now be written to disk. Any data on deleted or reformatted partitions will be lost.

[Go back](#)

[Write changes to disk](#)



The default installation of Red Hat Enterprise Linux is a basic server install. You can optionally select a different set of software now.

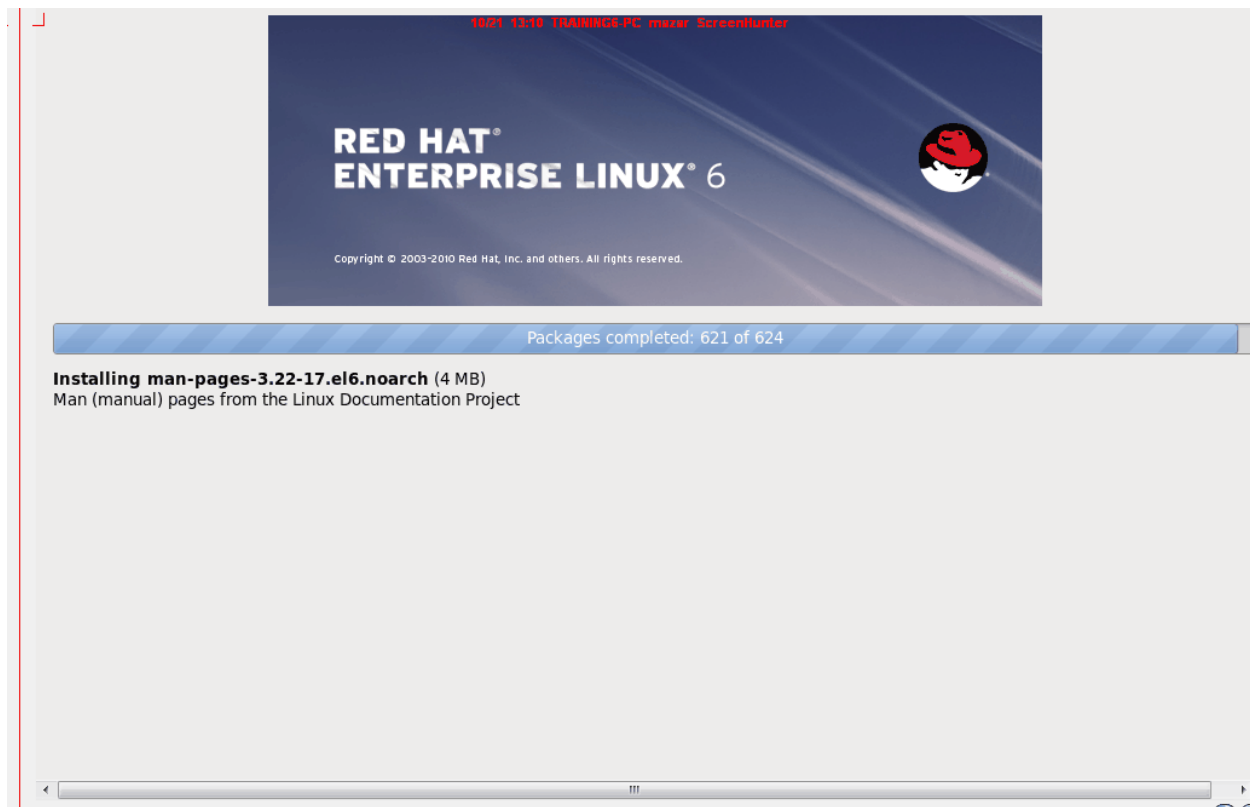
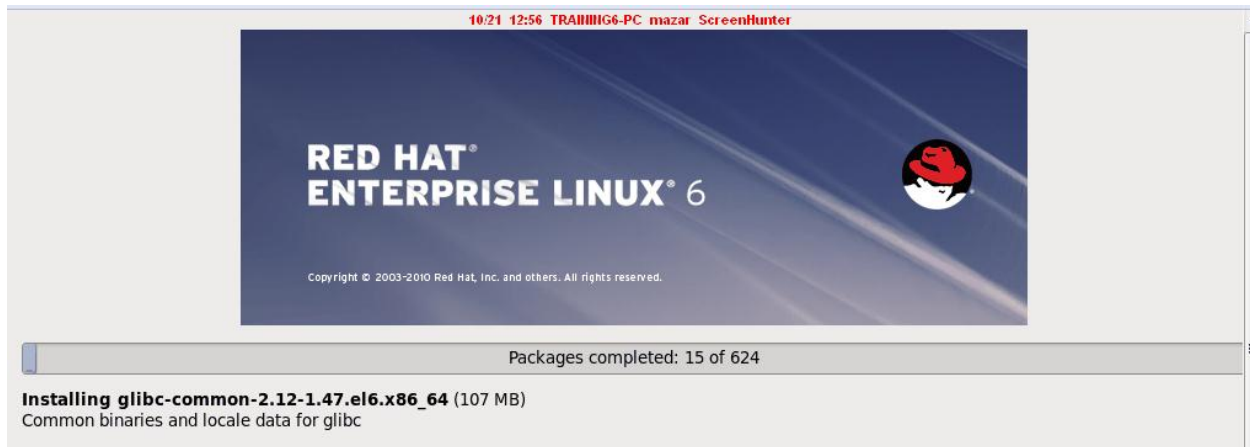
- ☒ Basic Server
- ☐ Database Server
- ☐ Web Server
- ☐ Identity Management Server
- ☐ Virtualization Host
- ☐ Desktop
- ☐ Software Development Workstation
- ☐ Minimal

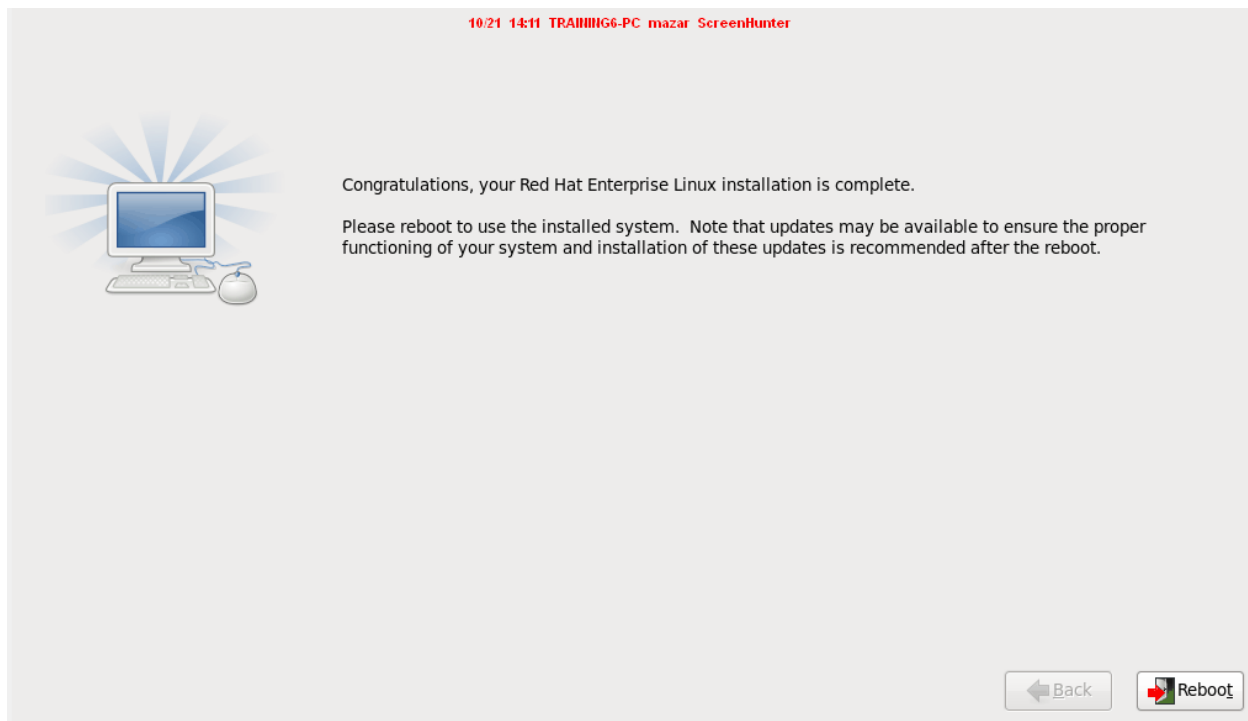
Please select any additional repositories that you want to use for software installation.

- ☐ High Availability
- ☐ Load Balancer
- ☒ Red Hat Enterprise Linux
- ☐ Resilient Storage

+ Add additional software repositories

Modify repository





Step 4: Reboot machine , you can get server terminal and remember you cannot invoke gui and login as a root user and password.

